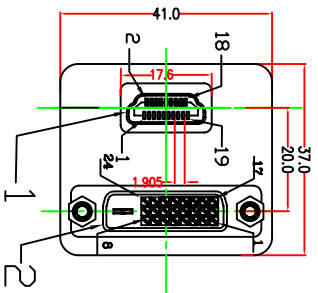
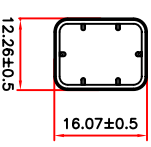
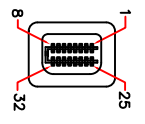
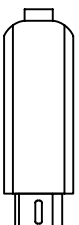
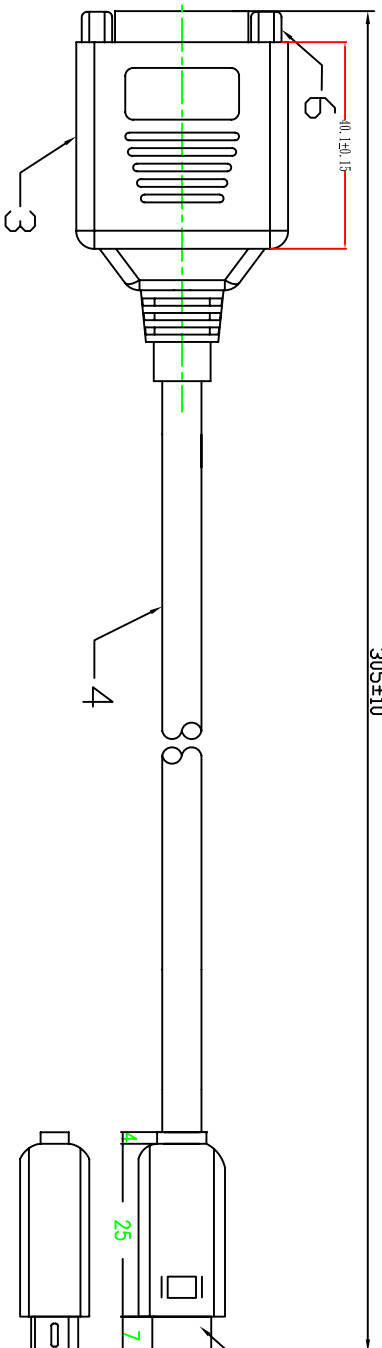


305±10



HDMI 19F-DVI24+1F



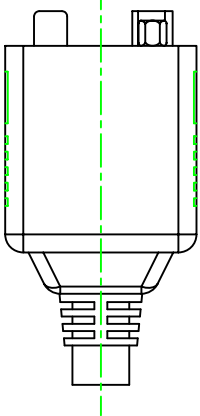
MINI DVI

Pin Assignment

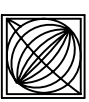
MINI DVI	DVI 24+1F	HDMI 19F
PIN 1	PIN 2	PIN 1
PIN 2	PIN 1	PIN 3
PIN 3	PIN 10	PIN 4
PIN 4	PIN 9	PIN 6
PIN 5	PIN 18	PIN 7
PIN 6	PIN 17	PIN 9
PIN 7	PIN 28	PIN 10
PIN 8	PIN 24	PIN 12
PIN,9,10	PIN 3	PIN 2
PIN,11,12	PIN 11	PIN 5
PIN,13,14	PIN 19	PIN 8
PIN,15,16	PIN 22	PIN 11
PIN 17	PIN 14	PIN 18
PIN 18	PIN 7	PIN 16
PIN 25	PIN 16	PIN 19
PIN 26	PIN 6	PIN 15
PIN 28	PIN 15	PIN 17
SHELL	SHELL	SHELL

ELECTRICAL PROPERTIES:

1. 100% OPEN SHORT MIS-WIRE TEST
2. Contact Resistance: 10ohm
3. Insulation Resistance: 5Mega ohm
4. HI-Pot: 300V DC/10ms



6	THUMB NUT #4-40UNC PLATED:GOLD	PCS	2
5	MINI-DVI32P SHELL NICKEL PLATED	PCS	1
4	HDMI CABLE UL20276 30AWG/4P+30AWG/1P+30AWG/5C+AB		
3	PVC MOLDED WHITE IN COLOR		
2	DVI 24+1 FEMALE SHELL PLATED: GOLD CONN PLATED G/F	PCS	1
1	HDMI 19P FEMALE SHELL PLATED: GOLD CONN PLATED G/F	PCS	1
No.	DESCRIPTION	UNIT	Q'TY



DUN CHENG TECH. CORP.,

SHIGANG 08/03/07
ERIC 08/03/07
SPL-MDVI-HFD25F-1FT

08/03/07

